



ST. ANDREW PRESBYTERIAN CHURCH
DENTON, TEXAS

**BRAINSTORMING TEAM
SUPER-WEDNESDAY TASTE-AND-SEE
ZOOM DISCUSSION**

NOVEMBER, 2020

BRAINSTORMING TEAM



Karen Jones



Russ Tillman



Gayle Strange



Tristan Ball



Lisa Patterson



Andrew Trachsel



Judy Keith



Richard Culp



Jonathon Fite

BRAINSTORMING TEAM SCOPE



Consider new vision and next steps for St. Andrew post-pandemic. What is next after The Junction (formerly Our Daily Bread and Monsignor King Outreach Center) transitions to its new location in 2021?





MISSION STUDY SUMMARY

AUGUST, 2015

[▶ VIDEO: BUILDING ON THE ROCK OF OUR FAITH ◀](#)

[▶ VIDEO: SAINT ANDREW IS... ◀](#)

SAINT ANDREW CORE VALUES



Defined by the congregation during the Visioning Workshops

- SOAR analysis is a strategic planning technique which helps organizations focus on their current strengths and opportunities, and create a vision of future aspirations and the result they will bring.
- In contrast to SWOT analysis, the SOAR model uses appreciative inquiry to focus the business on what is known to work, rather than internal weaknesses or perceived threats that might not play out.
- The output from a SOAR analysis is a set of actions that leverage strengths and opportunities to strive for shared aspirations with measurable results. It provides a basis for further in-depth analysis using other strategic planning tools.

STRENGTHS

OPPORTUNITIES

ASPIRATIONS

RESULTS

SOAR ASSESSMENT

STRENGTHS	OPPORTUNITIES
ASPIRATIONS	RESULTS



ST. ANDREW
DENTON, TEXAS

- What do we excel at?
- What are our greatest accomplishments?
- What are we most proud of?
- What makes us unique?
- What do we provide that is world class?
- What strengths are most valuable in our marketplace?
- What do we do or have that's better than anyone else?

- What partnerships would lead to greater success?
- What trends in the market align with our strengths?
- Are there gaps in the market that we could fill?
- What needs and wants are we currently not fulfilling for our internal and external stakeholders?

- What do we want to achieve in the future?
- What should our future missions look like?
- How can we make a difference?
- What are we passionate about?
- What strategies and actions support our future self?

- What measures will tell us we are on track to achieve success?
- How do we translate our vision of success into tangible outcomes?
- How do we know when we've achieved our goals?

TEXAS HEALTH RESOURCES COMMUNITY IMPACT ASSESSMENT



Significant community health disparities were assessed in both the primary and secondary data collection efforts. The main barriers included:

- Challenges with transportation
- Proximity to providers, both primary care and specialty services
- Limited supportive services for those who have developed a chronic disease
- Availability of affordable and safe housing
- Health insurance does not cover the costs of all health care needs and additional out-of-pocket costs are prohibitive
- Difficulty navigating support services and understanding government benefit options
- Lack of focus on prevention of chronic diseases, which puts community members at higher risk for developing these diseases



- COVID 19 helped us learn a lot: we have come a long way in both food and housing security.
- Mental Health is the biggest issue in Denton County – few agencies addressing and systemic barriers exacerbating problems
- Schools provide services once diagnosis made, but perception there are few resources to proactively identify / navigate that process
- Human trafficking is a growing problem in Denton given the major i35 transportation corridor
- Affordable childcare has been eviscerated with COVID. Many businesses closed / closing. Not sure when / if they are coming back.
- Sees need for integration of childcare, adult education and workforce solutions



Denton County



- COVID 19 helped us learn a lot: we have come a long way with food security.
- District has made a big push into 4-year-old preK. Attempted to partner with Denton Christian Preschool and Denton City Preschool, but not much progress there
- Sees opportunity to “share kids” to for full-day model for 3 and 4 year olds. Church provides half-day program, ISD provides half-day program. Can be on our site.
- Both State and federal funding available. Gets kids and family into system earlier to interventions and suite of services can be used.
- Confirms major need in the 0-3 space but ISD not equipped to support

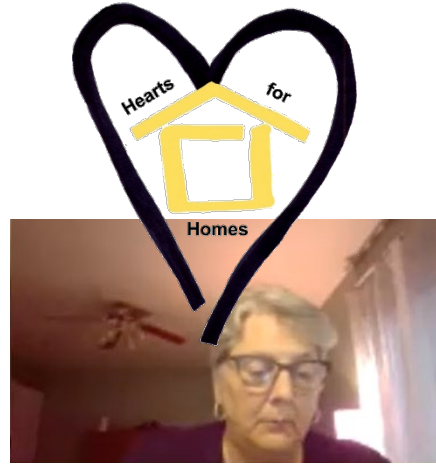
WENDY MCGEE, THE JUNCTION (ODB)



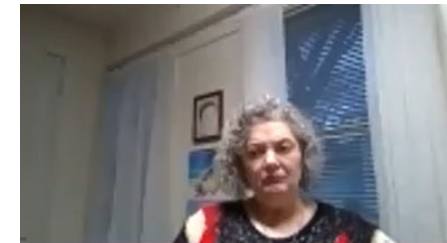
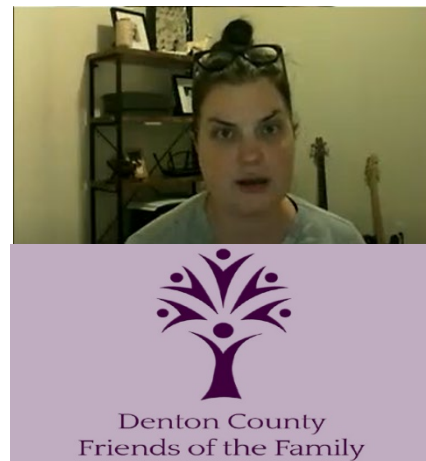
- Integrating with Monsignor King to provide an integrated day and night shelter.
- Connections with MHMR and UNT counseling's program for behavioral and mental health services, onsite addiction recovery programs
- Partnering with folks like Health Services of North Texas and the Denton County Health Clinic for medical services.
- Life skills and enrichment programs in Partnership with Good Will Employment Services an emerging area, but could broaden
- **Early childhood education and full-day care offerings for low income families are still a big need.**
- Mental health, child-youth-and-family counseling, alongside parental success/education classes is a gap.



MISSION MIXER



Treehouse



SOME PRELIMINARY THOUGHTS

- Food insecurity & housing still large needs. Fortunately, many agencies, including The Junction are integrating well across the county to mobilize against this need
- Acquisition of homes just west of our campus could provide a platform to play a more direct role in housing and / or human trafficking support ministries
- Mental health is a major issue, but some preliminary efforts in place to “move ball forward”. This is a large problem, perhaps difficult for SAPC to address well.
- Early childhood daycare, education, counseling and parental support programs a major need. This seems well aligned to our mission and existing ministries.
- Desire to reach into the community and engage multigenerational downtowners in non-traditional ways. An expansive downtown meditation garden might help with health disparities, but could likely enhance expanded childcare / pre-K programming.

DOWNTOWN MEDITATION GARDEN?



DOWNTOWN GARDEN



ST. ANDREW
DENTON, TEXAS



DOWNTOWN GARDEN



ST. ANDREW
DENTON, TEXAS



DOWNTOWN GARDEN



ST. ANDREW
DENTON, TEXAS



DOWNTOWN GARDEN



ST. ANDREW
DENTON, TEXAS





Could this hedge be a columbarium?

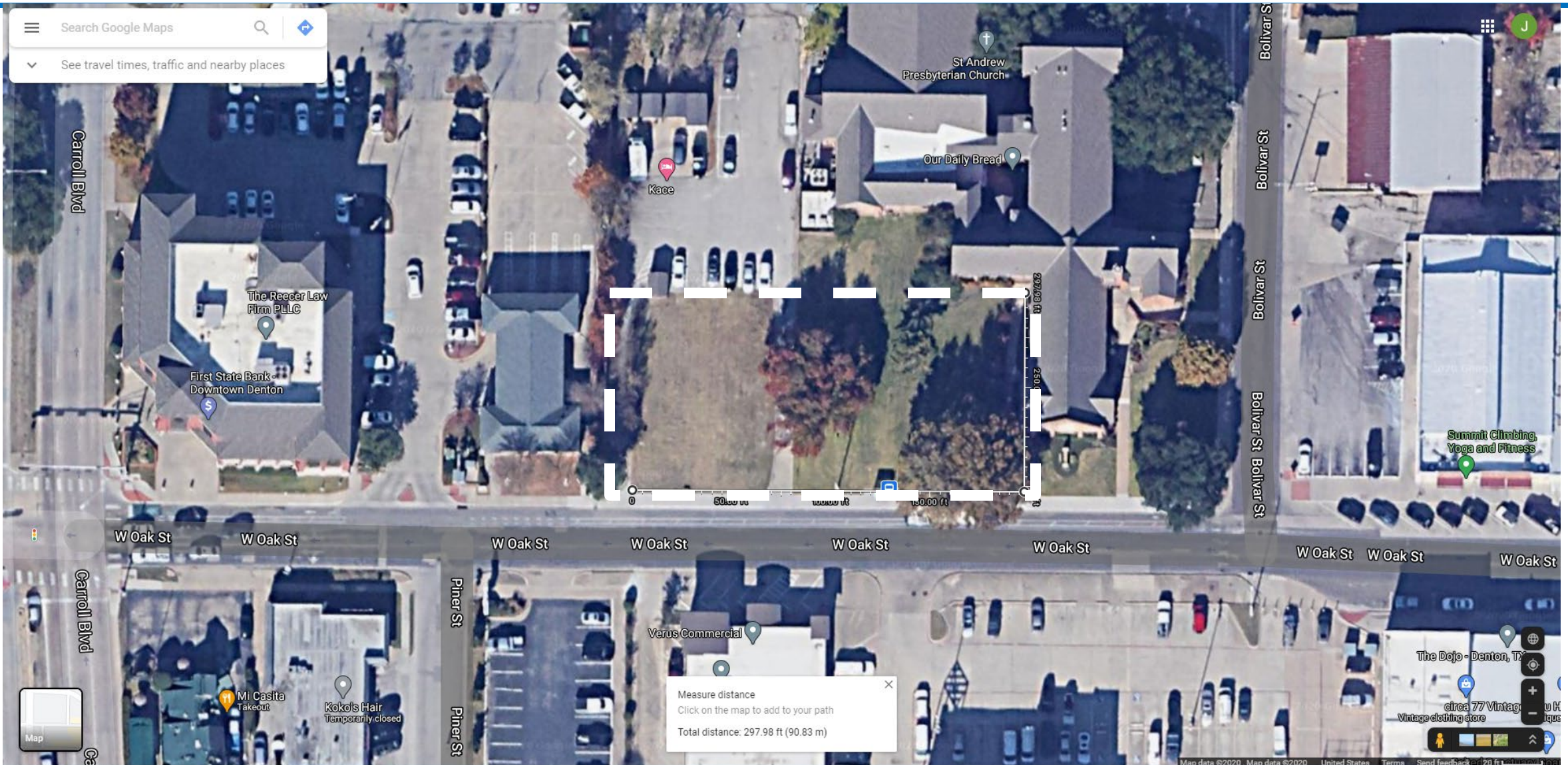
Labyrinth Here?



<https://youtu.be/XnnlxYcOsyM>



DOWNTOWN GARDEN



OPEN DISCUSSION:

STRENGTHS

OPPORTUNITIES

ASPIRATIONS

RESULTS